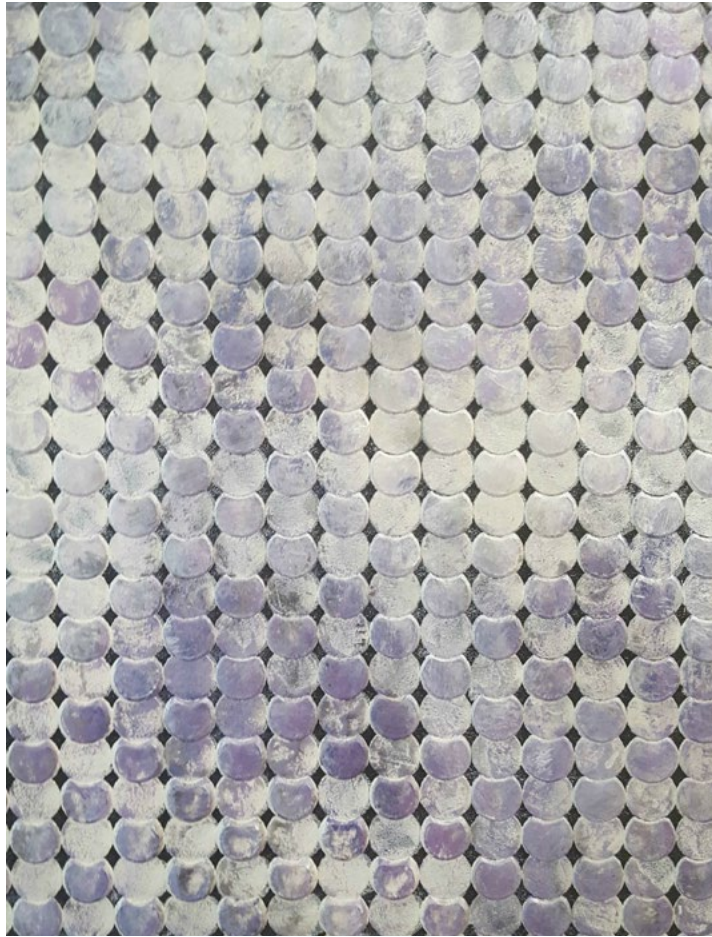




# Step-by-Step with Modern Masters

## RECIPE N°7 | Shimmering Scales

---



This recipe and pattern can create the look of a penny wall or, if used with a thoroughly contemporary twist as we did here, scales, waves and scallops. Varying the color can help the all-over geometric treatment blend seamlessly into many design schemes. Try it with Metal Effects for an oxidized pennies look, too! Whichever pattern path you take, it's a beautiful and unexpected look for walls, furniture, doors, canvas art, and more.

### PRODUCTS NEEDED

- Modern Masters [ShimmerStone Tintable Base](#)
- Modern Masters [Lilac Metallic Paint](#)
- Flat Black Latex Paint
- Wallovers' [Pennies Stencil](#)

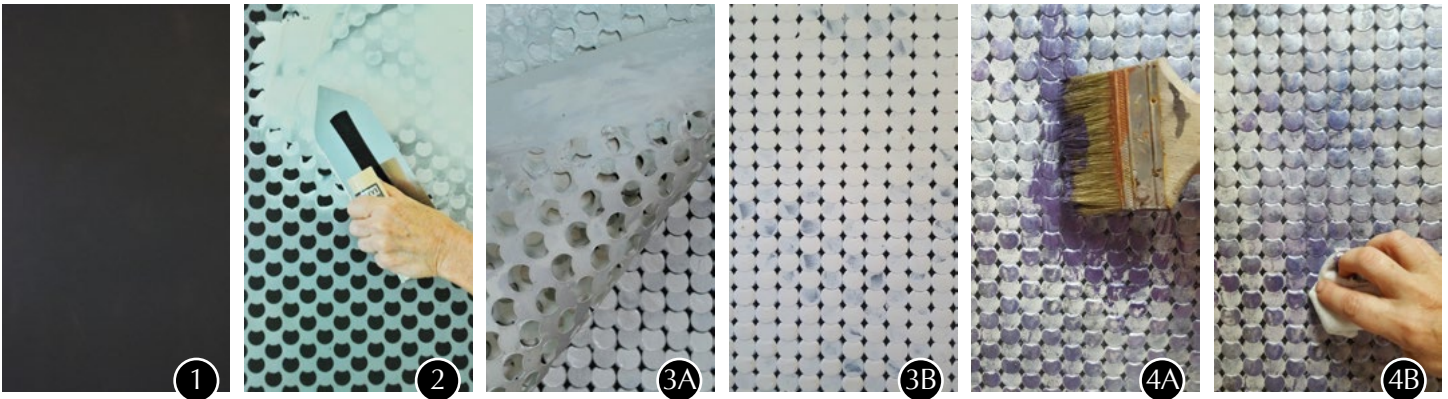
### TOOLS NEEDED

- Modern Masters [225mm Japanese Trowel](#)
- 4" Japan Scraper
- 4" Chip Brushes
- Sponge, Rags and Paint Containers
- Stencil Spray Adhesive



# Step-by-Step with Modern Masters

## RECIPE N° 7 | Shimmering Scales



STEP 1: Base surface with 2 - 3 coats of flat black latex paint. Let dry 1 to 2 hours between coats.

STEP 2: Lightly spray one side of the stencil with spray adhesive and firmly press it onto the surface. Apply a thin, even layer of ShimmerStone Tintable Base to the entire surface, working from the top to the bottom. Use light pressure so as not to “squish” the texture under the stencil’s design. You will see the background color thru the ShimmerStone in some areas. Remove the stencil and let dry.

*TIP: Using the stencil spray adhesive will help prevent the ShimmerStone from bleeding under the stencil without marring your surface. The stencil will need to be cleaned about every 3 or 4 uses so that the ShimmerStone does not dry on your stencil. Wash the stencil with a sponge or brush with warm soapy water or Krud Kutter and let dry. If you are working a large area, purchase several stencils so you can keep working while alternating stencils are being cleaned and dried.*

STEP 3: Realign the stencil by simply shifting it to the left or right by one penny space. Trowel on the second layer with the ShimmerStone Tintable Base. This layer should be heavier and it should be harder to see any background color showing through. This creates the pennies or scales with different thicknesses. Follow the same cleaning suggestions as in Step 2. Remove the stencil and let completely dry.

STEP 4: Dip the 4” chip brush into the Lilac Metallic Paint and dab onto a rag to remove excess. Hold the brush at a 45 degree angle to the surface and dry brush randomly over 30 to 40% of the surface. Use a dry soft rag to soften some of the areas.

*You are done!*