

## Metal Effects Primer (AM203)



A unique water base, acrylic primer designed to block Patina Aging Solutions & Rust Activator from reaching the metal or wood surface chosen as a substrate.

\*Available in 4 ounce, pint and gallon container sizes.

## Oxidizing Paints



\*Available in 6 ounce, pint and gallon container sizes.

Water base paints containing real metal particles that will tarnish naturally over time and when exposed to the elements. Use Patina Aging Solutions & Rust Activator to speed up oxidation and create beautiful, authentic Patina or Rusted Iron finishes on any paintable surface.

## Permacoat Xtreme™ (AM204)



\*Available in 4 ounce, pint and gallon container sizes.

This water base protective sealer and top coat is designed to work over Metal Effects Rust Activated Oxidizing Iron Paint. Permacoat Xtreme creates a weather resistant barrier to seal and protect surfaces.

## Patina Aging Solutions & Rust Activator



\*Available in 4 ounce, pint and gallon container sizes.

Applied over Oxidizing Paints, the water base solutions speed up the oxidation process and create beautiful, authentic Green and Blue Patinas or Weathered Rust finish.



11 Hawthorn Pkwy., Vernon Hills, IL 60061  
888-822-3570 [rustoleum.com/modernmasters](http://rustoleum.com/modernmasters)



# Metal Effects® COLLECTION



## First Choice in Oxidized Finishes

# of Patinization

# Ancient Art

We combined the ancient art of patinization with modern day paint technology to formulate Metal Effects oxidizing paints, patinas and rust activator. These products create the distinctive and timeless look of bronze and copper patina or the weathered appearance of rusted iron in a matter of minutes, on any paintable surface.

- Easy to Use
- Interior/Exterior
- Brush or Roller Applied
- Available in 2 oz., 8 oz. kits\* and sold seperately



2 oz. kit

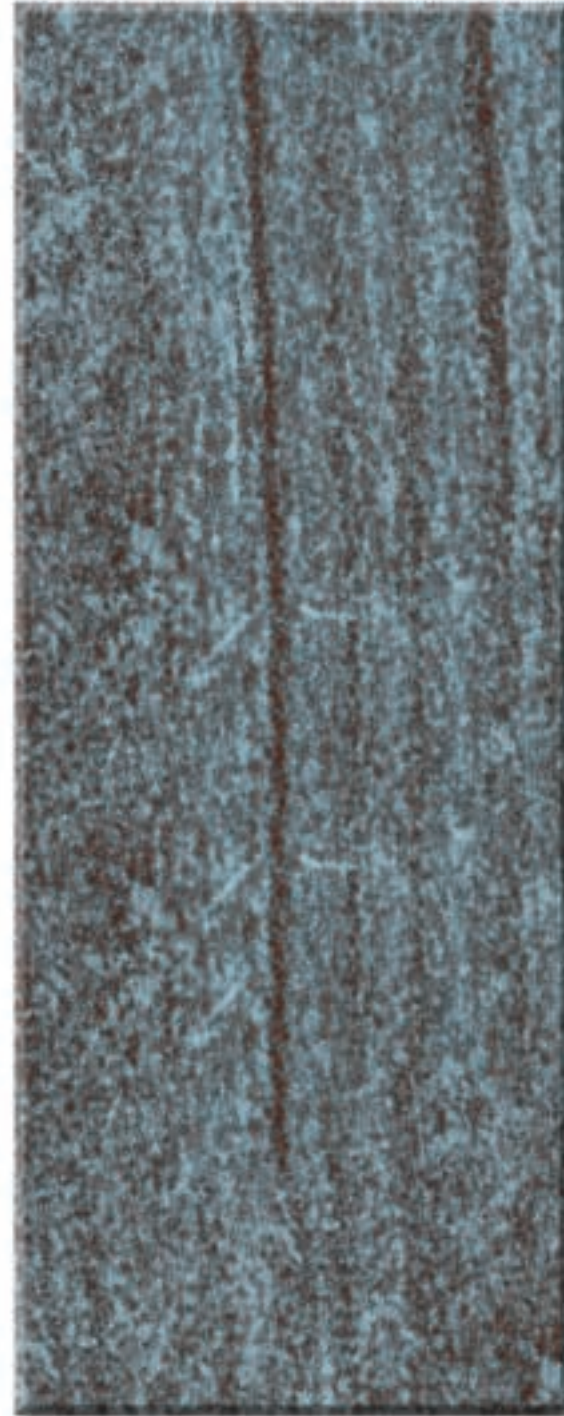


8 oz. kit \* Sealer included in kit

Metal Effects - Green Patina Finish



Metal Effects - Blue Patina Finish



Metal Effects - Rust Finish

